



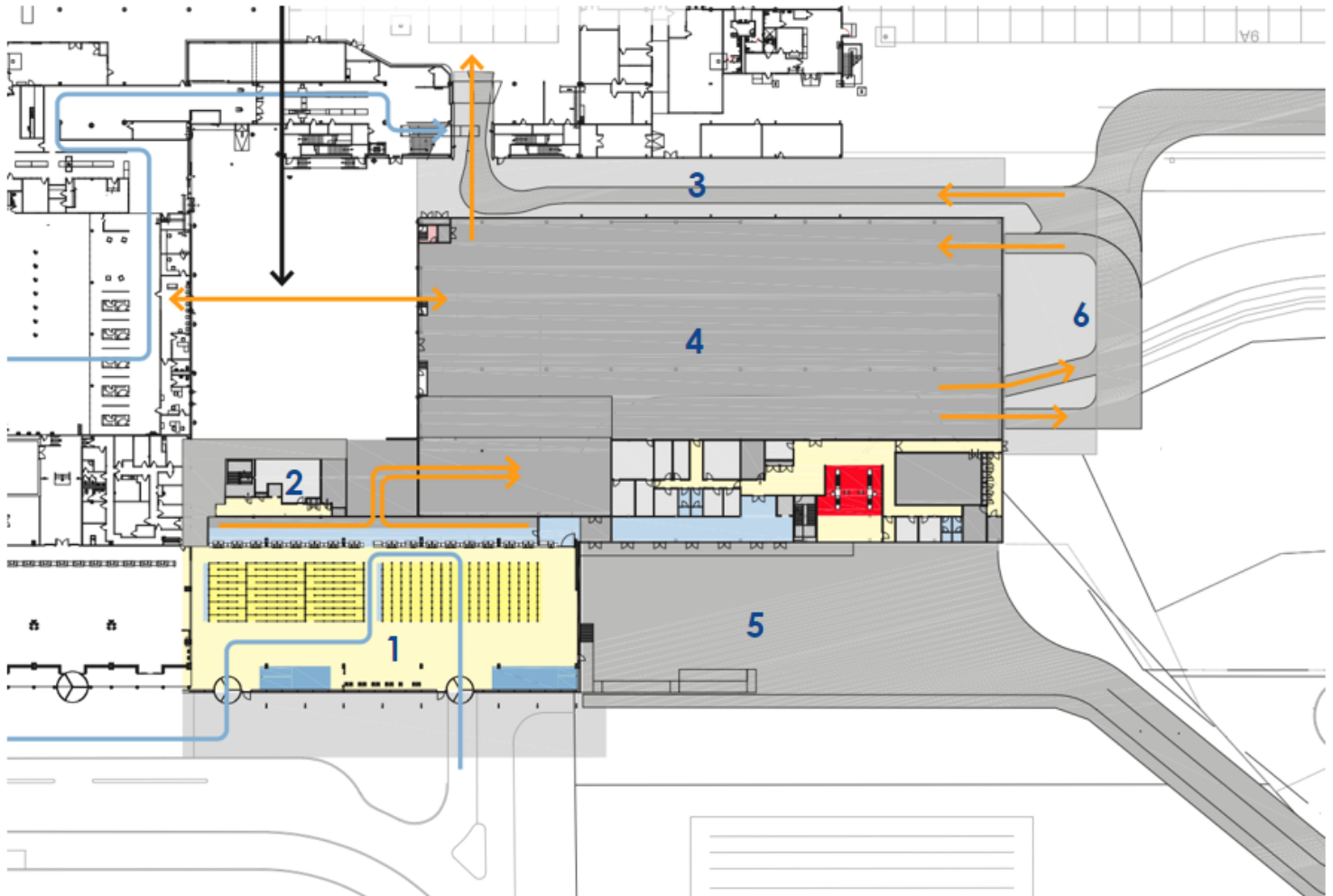
INNOVATING *Happiness*

THE OFFICIAL GATEWAY 2030 NEWSLETTER

Major Achievements

The completion of the 4 out of the 6 layers of the roof structure of building HC were finalized in Q4. Furthermore, we also completed the installation of the steel grid floor in this same building. Mechanical Electrical & Plumbing (MEP) installation has started. We finalized the concrete walls and columns on the 1st floor of building HB. Lastly, we also completed the installation of the steel structure and hollow core slabs in this same location.

Phase 1A Overview



1. HA Building - Once completed, this building will function as an extension to the US Departure Hall.
2. Connection to Building HB.
3. Micro piling.
4. Building HC - Once completed, the building will host the Baggage Handling System (BHS).
5. Landside Connections to Departure Hall and Baggage Hall.
6. Airside Connections to Baggage Hall.



Health & Safety Highlights

- Lifting, Carrying, and Handling -

It may not seem like lifting, carrying, and handling objects is as important in construction safety meeting topics, but there is a lot of potential for harm, injury, and death when it comes to these things.

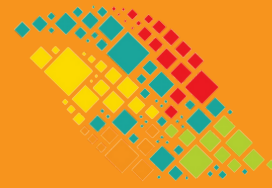
Discuss the proper way to lift things using the legs, rather than the back, and explain the long-term issues associated with lifting or carrying things incorrectly. Ensure your crews have the necessary PPE when handling and discarding hazardous materials, as well as the necessary tools/equipment for heavy lifting.



PROGRAM UPDATE



- Design extraction for Phase 1B has been done, as well as the technical review. A workshop was held with the PMO team.
- NACO developed solutions for far-reaching review findings. NACO also assessed the impact of the schedule, cost, and quality.
- The Program Board was advised on the change items and the preferred solutions were determined with the stakeholders.



Did You Know?



The Beumer team was on site to perform a complete 3D scan of the steel structure in building HC.

What's Next?

INNOVATING
Happiness

- Completion of the steel structure in the 2nd part of building HC.
- Completion of the installation of the steel grid floor in building HC.
- Continue the installation MEP items in building HC.
- Completion of the installation of the steel structure in building HB (first floor)

