

ARUBA AIRPORT AUTHORITY N.V.



# Monthly Traffic Statistics

APRIL 2026



# Traffic Performance Highlights

April 2026 vs 2025



Total Passengers (RGP)

**162.554**

15.5% ▲

(2025: 140.714)



Total Seat Capacity

**194.626**

14.6% ▲

(2025: 169.904)



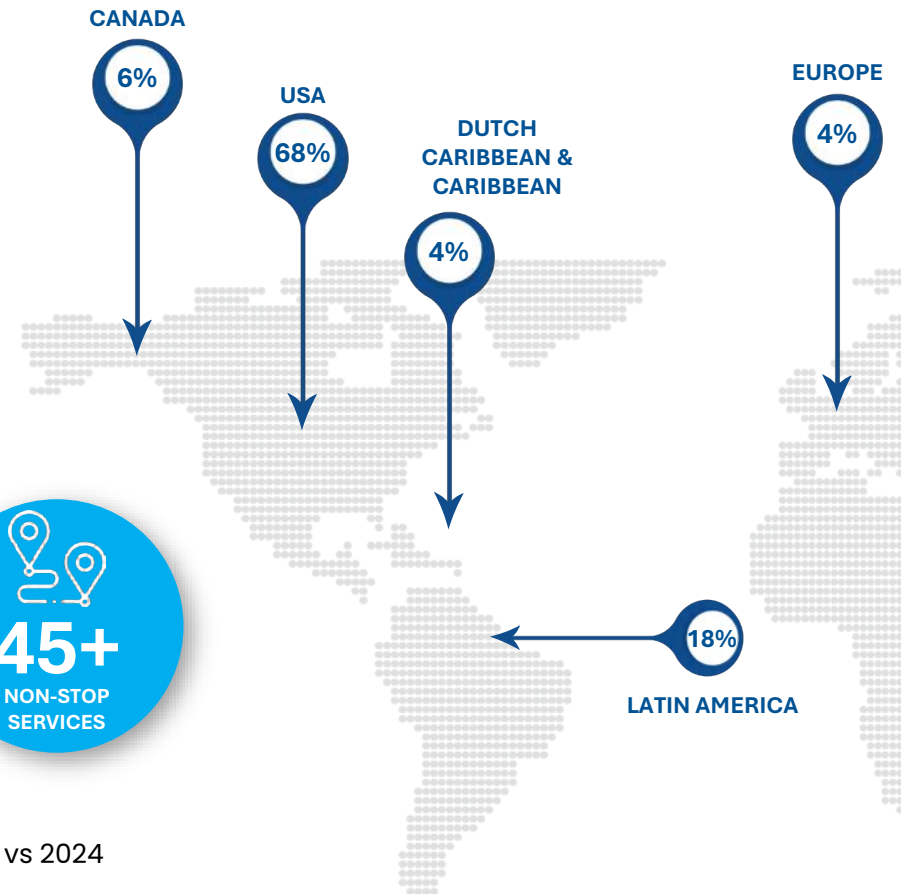
Sustainability Accreditations



airport carbon accredited  
OPTIMISATION



Passengers Market (RGP)



Load Factor

**88.4%**

1.0 pts. ▲

(2025: 87.4 pts.)



Flight Departures

**1.373**

13.9% ▲

(2025: 1.205)



Source | Aruba Airport Authority – MoM 2025 vs 2024

# Traffic Performance Highlights

YTD APRIL 2026 vs 2025



Total Passengers (RGP)

623.301

8.7% ▲

(2025: 573.651)



Total Seat Capacity

766.479

7.9% ▲

(2025: 710.162)



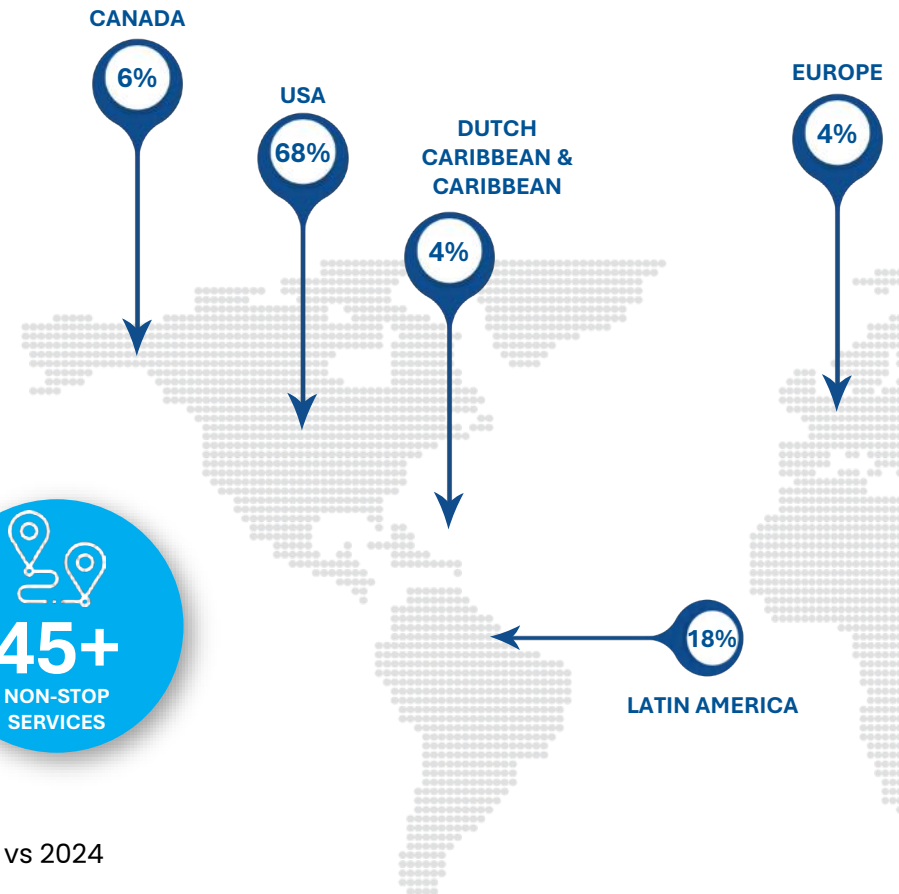
Sustainability Accreditations



airport carbon accredited  
OPTIMISATION



Passengers Market (RGP)



Load Factor

86.0%

0.3 pts. ▲

(2025: 85.7pts.)



Flight Departures

5.368

8.2% ▲

(2025: 4.960)



Source | Aruba Airport Authority – MoM 2025 vs 2024

# Airlines Operating at Aruba Airport

Non-stop service to over 45+ destinations

NORTH AMERICA		EUROPE		LATIN AMERICA		CARIBBEAN	
	DESTINATIONS		DESTINATIONS		DESTINATIONS		DESTINATIONS
	4 (+1) <i>NEW: FLL</i>		1		2		1
	6		1		3		1
	4				1		2
	4				1		1
	2				1		2
	1				1		
	1				3 <i>NEW</i>		
	1						
	1						
	1						





MONTHLY TRAFFIC REPORT



# Monthly Traffic Statistics

2026 vs 2025

# Air Traffic Dashboard

## April 2026 vs 2025



162.554

Revenue Generating Passengers  
Global  
15.5% ↑



172.054

Total Departing Passengers  
Global  
15.9% ↑



6

Total Transfer Passengers  
(86.7)% ↓



7.970

Total Transit Passengers  
25.5% ↑



194.626

Total Outbound Seat Capacity  
Global  
14.6% ↑



10.522

Seat Capacity  
Europe  
(3.1)% ↓



37.092

Seat Capacity  
Latin America  
29.9% ↑



125.384

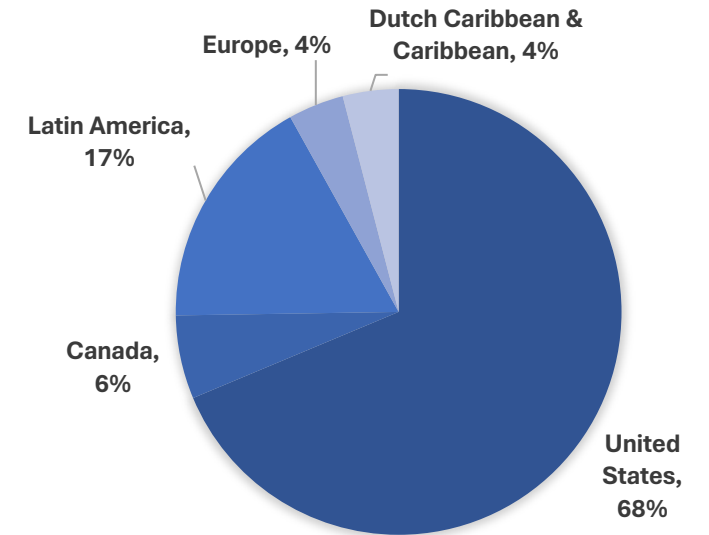
Seat Capacity  
USA\*  
11.7% ↑



10.053

Seat Capacity  
Canada  
37.5% ↑

### TRAFFIC DISTRIBUTION (RGP)



\*USA: Data Includes Non-Scheduled Charters, Tech Stops, and Military

\*\* Includes all passengers with exempted passenger-related charges

# Air Traffic Dashboard

YTD April 2026 vs 2025



623.301

Revenue Generating Passengers

Global

8.7% ↑



658.848

Total Departing Passengers

Global

8.2% ↑



110

Total Transfer Passengers

(64.6)% ↓



28.966

Total Transit Passengers

(1.6)% ↓



766.479

Total Outbound Seat Capacity

Global

7.9% ↑



48.248

Seat Capacity

Europe

(0.2)% ↓



145.872

Seat Capacity

Latin America

28.6% ↑



486.559

Seat Capacity

USA\*

4.0% ↑



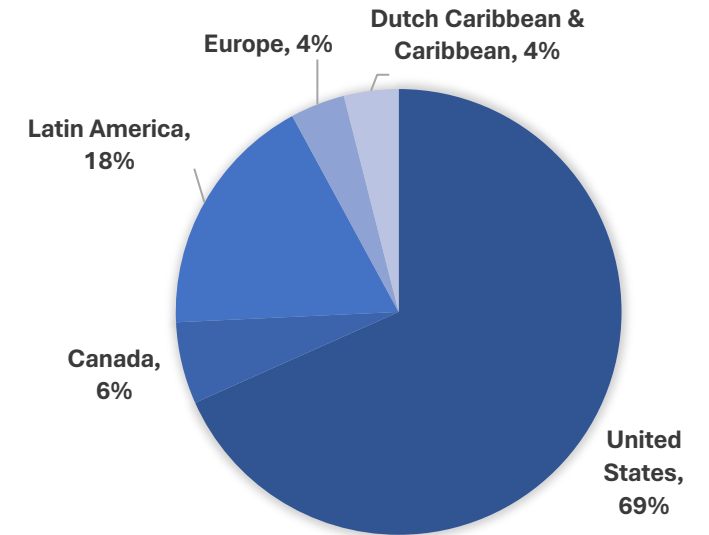
42.608

Seat Capacity

Canada

12.9% ↑

## TRAFFIC DISTRIBUTION (RGP)



\*USA: Data Includes Non-Scheduled Charters, Tech Stops, and Military

\*\* Includes all passengers with exempted passenger-related charges

# Passenger Load Factor (LF)

*Per Region | April 2026 vs 2025*

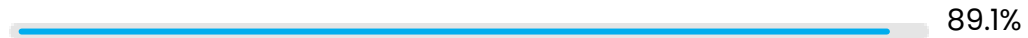
## Global

vs. 87.4% 1.0 pts



## United States

vs. 89.9% -0.8 pts



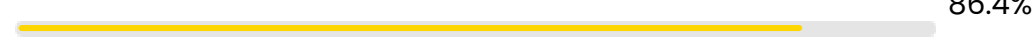
## Canada

vs. 93.5% -2.1 pts



## Latin America

vs. 79.6% 6.8 pts



## Europe

vs. 94.8% 2.0 pts



## Dutch Caribbean & Caribbean

vs. 70.1% 6.7 pts



# Passenger Load Factor (LF)

Per Region | YTD April 2026 vs 2025

## Global

vs. 85.7% 0.2 pts



## United States

vs. 88.4% -0.9 pts



## Canada

vs. 89.5% 0.3 pts



## Latin America

vs. 80.0% 1.5 pts



## Europe

vs. 86.1% 4.4 pts



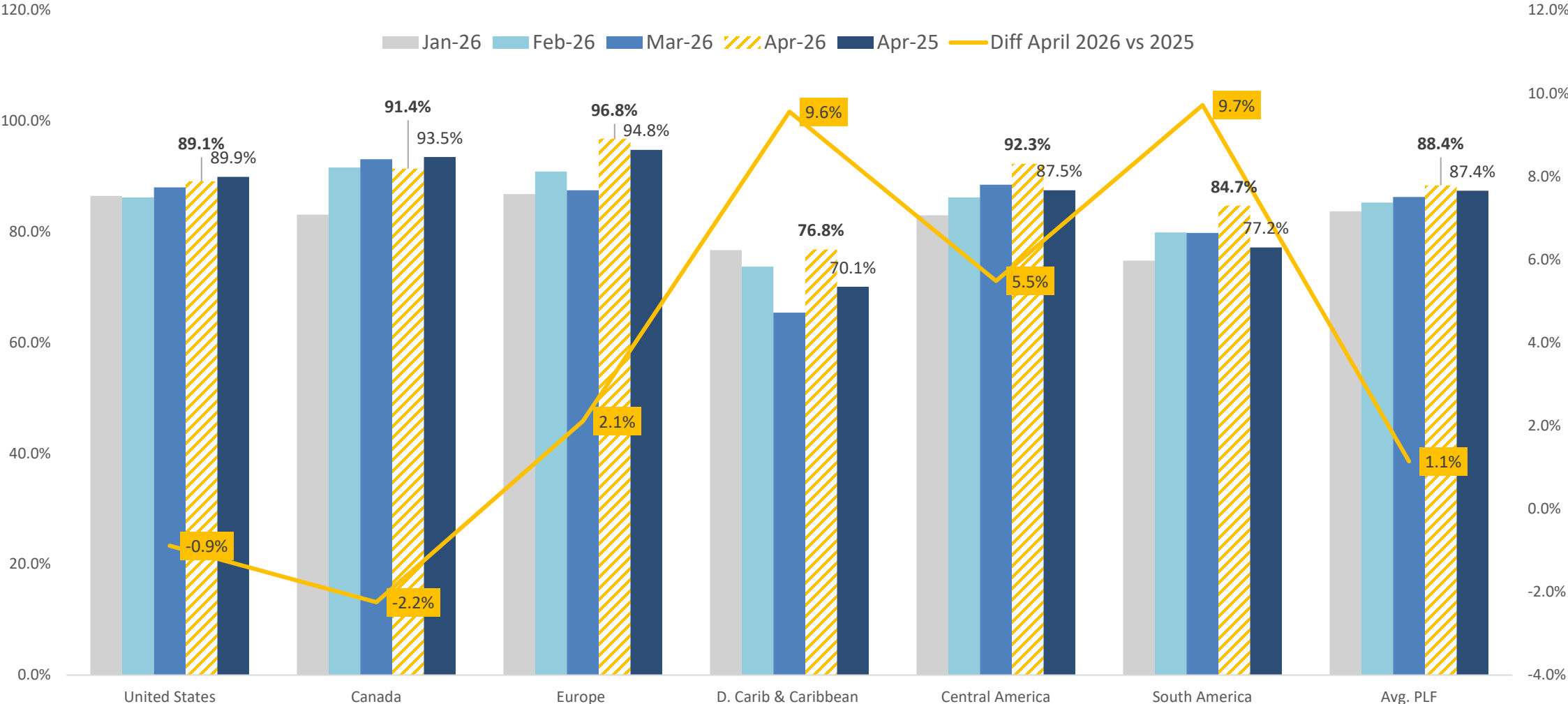
## Dutch Caribbean & Caribbean

vs. 68.5% 6.2 pts



# Passenger Load Factor (LF) – By Region

## YTD April 2024-2026



Source | Aruba Airport Authority – MoM April 2025 vs 2024

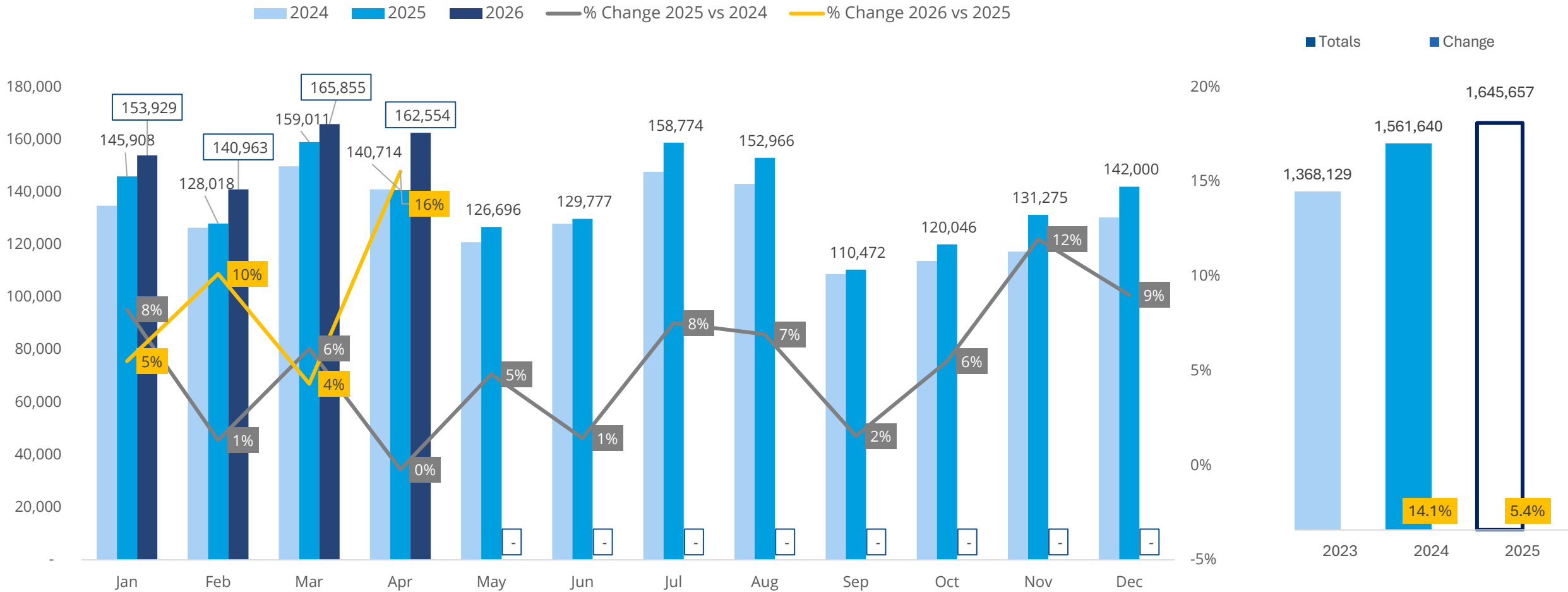
MONTHLY TRAFFIC REPORT

# Passenger Traffic Data

Revenue Generating Passengers  
(RGP)

# Revenue Generating Passengers (RGP) – By Month

## 2024 - 2026

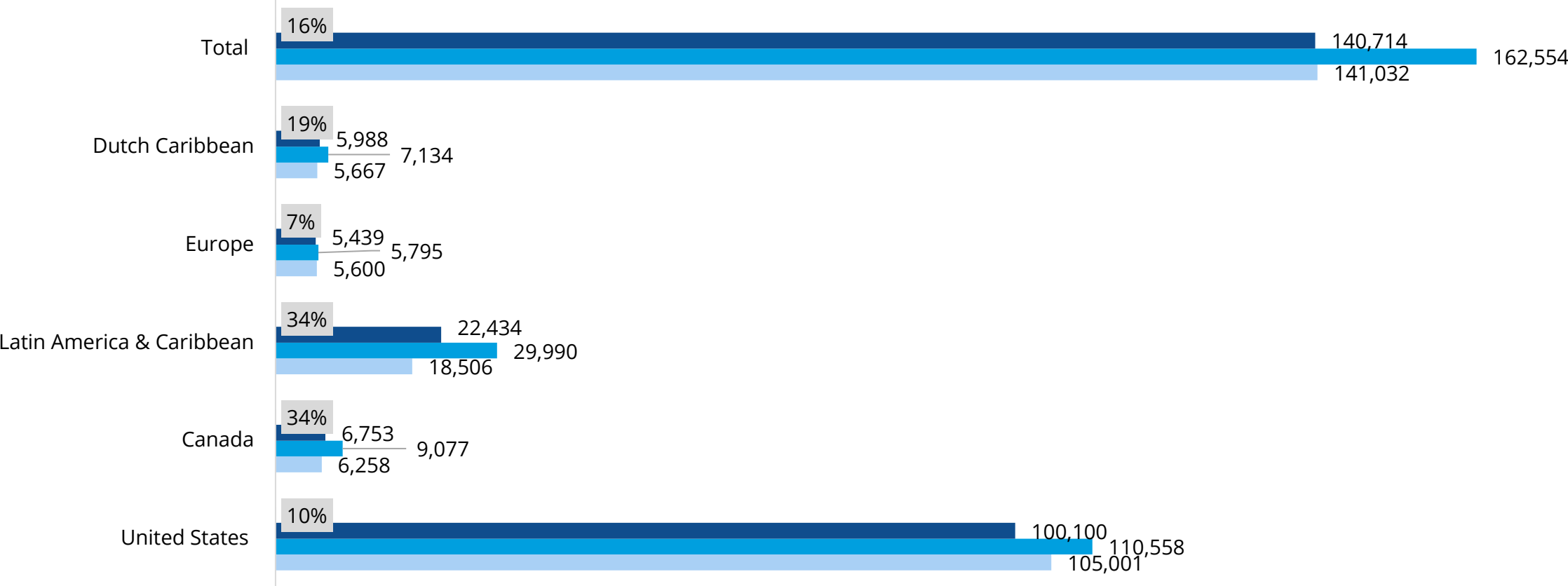


Source | Aruba Airport Authority – MoM April 2025 vs 2024

# Revenue Generating Passengers (RGP) – By Month

April 2026 vs 2025

■ Change vs 2025   ■ Apr-25   ■ Apr-26   ■ Apr-24



Source | Aruba Airport Authority – MoM April 2025 vs 2024

MONTHLY TRAFFIC REPORT

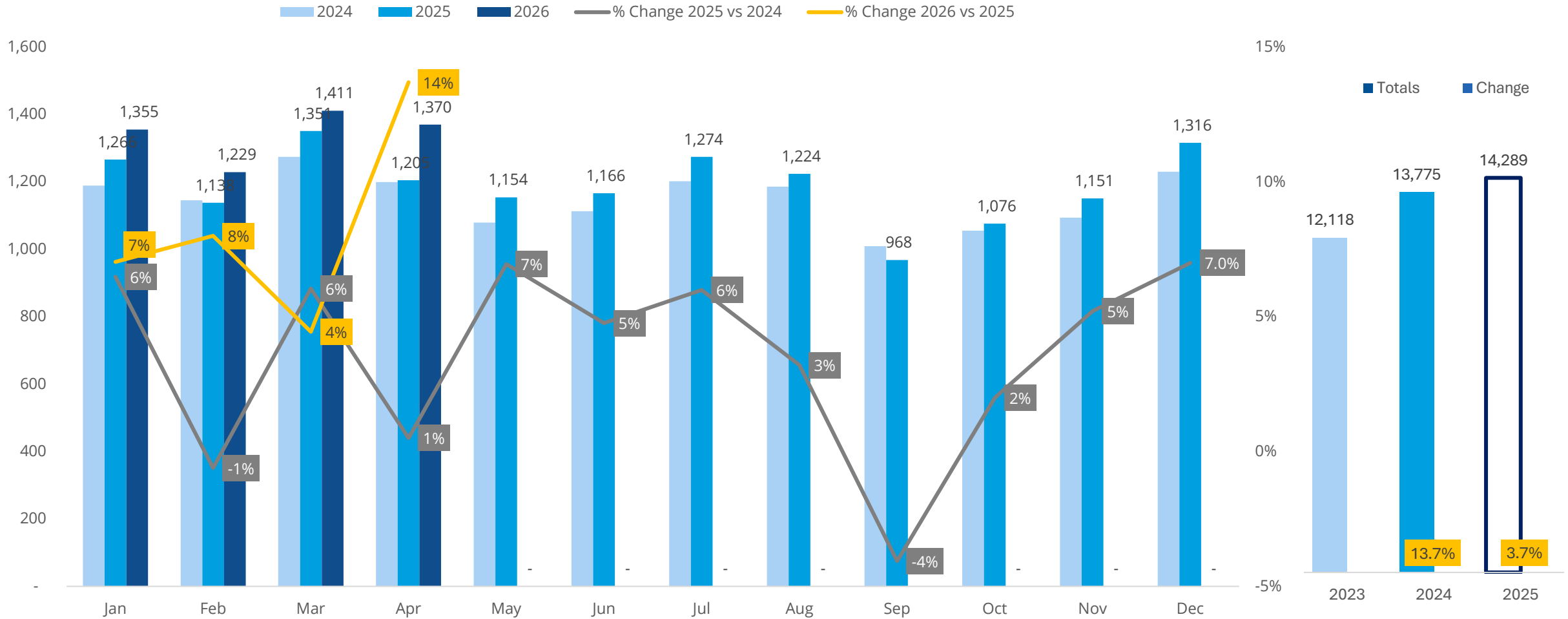
# Traffic Data

Aircraft Movements



# Aircraft Departures (Flights) – By Month

## 2024 - 2026



Source | Aruba Airport Authority – MoM April 2025 vs 2024

An aerial photograph of an airport terminal and tarmac. The terminal building has a light-colored facade and a prominent yellow tower. The tarmac is paved and shows various aircraft parking spots. In the foreground, there are several rows of blue metal structures, possibly for aircraft parking or maintenance. The background shows a coastal area with buildings and a body of water under a cloudy sky. A large blue graphic overlay is on the right side of the image, containing text.

MONTHLY TRAFFIC REPORT

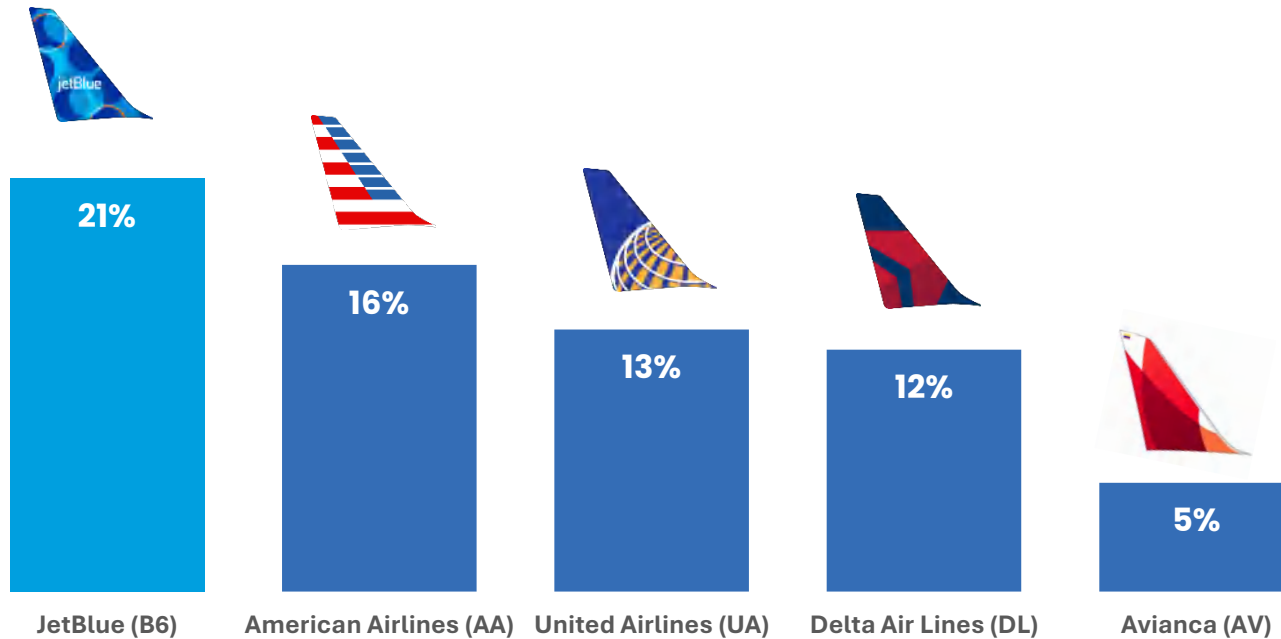
# Airline Market Analysis

Market share by Airline

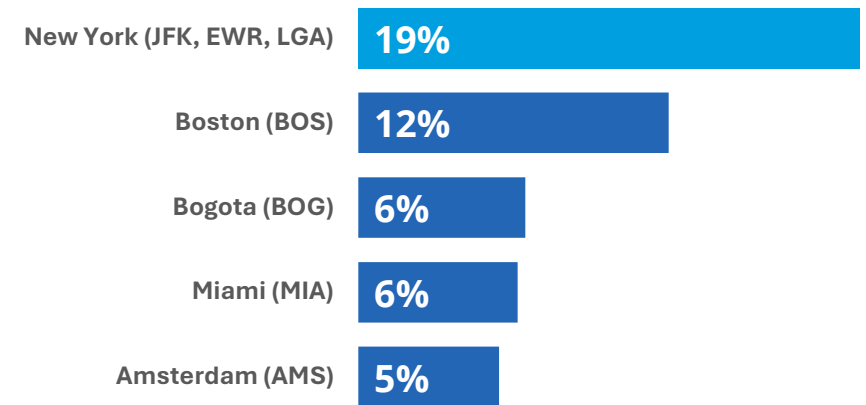
# Market Share – By Airline & Gateway

April 2026

## Airline MS by RGP



## Gateway MS by Seat Capacity





63 | 64

MONTHLY TRAFFIC REPORT

# Weekly Flight Schedule


PERIOD: March – September 2026

# Flight Schedule

May – October 2026

Note: Flight schedules are subject to change without prior notice and should not be considered final

## UNITED STATES

AIRLINE	DESTINATION	SUMMER PERIOD						
		May	June	July	Aug	Sept	Oct	
 American Airlines	MIAMI	14 Double Daily	21 (+7) Triple Daily	21 (+7) Triple Daily	14 Double Daily	14 Double Daily	14 Double Daily	
	CHARLOTTE	12 2-MON   TUE   WED   2-THU   2-FRI   2-SAT   2-SUN	14 Double Daily	14 Double Daily	10 MON   TUE   WED   2-THU   FRI   2-SAT   2-SUN	12 2-MON   TUE   WED   2-THU   2-FRI   2-SAT   2-SUN	12 2-MON   TUE   WED   2-THU   2-FRI   2-SAT   2-SUN	
	PHILADELPHIA	8 Daily and 2 <sup>nd</sup> SAT	8 Daily and 2 <sup>nd</sup> SAT	8 Daily and 2 <sup>nd</sup> SAT	8 Daily and 2 <sup>nd</sup> SAT	1 SAT	5 MON   THU   FRI   SAT   SUN	
	CHICAGO SEASONAL SERVICE	X	X	X	X	X	X	
	LA GUARDIA – NEW YORK SEASONAL SERVICE	1 SAT	X	X	X	X	X	
	DALLAS SEASONAL SERVICE	1 SAT	1 SAT	1 SAT	1 SAT	X	X	



# Flight Schedule

May – October 2026

Note: Flight schedules are subject to change without prior notice and should not be considered final

## UNITED STATES

AIRLINE	DESTINATION	SUMMER PERIOD					
		May	June	July	Aug	Sept	Oct
jetBlue®	BOSTON	22 (+2) 3-MON   2-TUE   2-WED   3-THU   4-FRI   4-SAT   4-SUN	17 2-MON   2-TUE   2-WED   2-THU   3-FRI   4-SAT   2-SUN	20 (+2) 3-MON   2-TUE   2-WED   3-THU   3-FRI   4-SAT   3-SUN	20 (+2) 3-MON   2-TUE   2-WED   3-THU   3-FRI   4-SAT   3-SUN	11 MON   TUE   WED   THU   2-FRI   3-SAT   2-SUN	18 2-MON   2-TUE   2-WED   2-THU   3-FRI   4-SAT   3-SUN
	JFK	15 Double Daily and 3 <sup>rd</sup> SAT	19 3-MON   2-TUE   2-WED   2-THU   3-FRI   4-SAT   3-SUN	24 Triply Daily and 4 <sup>th</sup> MON – FRI - SAT	23 4-MON   2-TUE   3-WED   3-THU   4-FRI   4-SAT   3-SUN	13 2-MON   TUE   WED   2-THU   2-FRI   3-SAT   2-SUN	19 3-MON   2-TUE   2-WED   2-THU   3-FRI   3-SAT   3-SUN
	NEWARK	1 SAT	7 Daily	1 SAT	SUSPENDED	SUSPENDED	SUSPENDED
	FLL NEW ROUTE	3 TUE   THU   SAT	3 TUE   THU   SAT	7 Daily	7 Daily	7 Daily	7 Daily







# Flight Schedule

May – October 2026

Note: Flight schedules are subject to change without prior notice and should not be considered final

## UNITED STATES

AIRLINE	DESTINATION	SUMMER PERIOD					
		May	June	July	Aug	Sept	Oct
	BALTIMORE	2 SAT   SUN	5 MON   THU   FRI   SAT   SUN	5 MON   THU   FRI   SAT   SUN	2 SAT   SUN	2 SAT   SUN	2 SAT   SUN
	ORLANDO	7 Daily	8 (+1) Double Daily and 2 <sup>nd</sup> SAT	8 (+1) Double Daily and 2 <sup>nd</sup> SAT	7 Daily	7 Daily	7 Daily
	FORT LAUDERDALE	DISCONTINUED					
	MINNEAPOLIS SEASONAL SERVICE	X	X	X	X	X	
	ATLANTA	DISCONTINUED					

# Flight Schedule

May – October 2026

Note: Flight schedules are subject to change without prior notice and should not be considered final

## CANADA

AIRLINE	DESTINATION	SUMMER PERIOD					
		May	June	July	Aug	Sept	Oct
	TORONTO SEASONAL SERVICE	1 SAT	1 SAT	1 SAT	1 SAT	1 SAT	1 SAT
	TORONTO	6 (+3) MON   TUE   WED   THU   FRI   SAT	3 TUE   WED   SAT	5 MON   TUE   WED   FRI   SAT	5 MON   TUE   WED   FRI   SAT	3 TUE   FRI   SAT	4 TUE   WED   FRI   SAT

## EUROPE





	AMSTERDAM (VIA BON)	7 Daily	6 MON   TUE   WED   FRI   SAT   SUN	7 Daily	7 Daily	7 Daily	
	AMSTERDAM (VIA CUR)	2 MON   FRI	2 MON   FRI	2 MON   FRI	2 MON   FRI	2 MON   FRI	

# Flight Schedule

May – October 2026

Note: Flight schedules are subject to change without prior notice and should not be considered final

## LATIN AMERICA





AIRLINE	DESTINATION	SUMMER PERIOD						
		May	June	July	Aug	Sept	Oct	
 Avianca	BOGOTA	14 Double Daily	14 Double Daily	14 Double Daily	14 Double Daily	14 Double Daily	14 Double Daily	
 Copa Airlines	PANAMA	16 (+6) MON   2-TUE   3- WED   2-THU   2-FRI   3-SAT   3-SUN	16 (+6) MON   2-TUE   3- WED   2-THU   2- FRI   3-SAT   3- SUN	17 (+5) Double Daily and 3 <sup>rd</sup> WED – SAT – SUN	15 (+5) MON   2-TUE   3-WED   2- THU   2-FRI   2- SAT   3-SUN	15 (+5) MON   2-TUE   2-WED   2- THU   2-FRI   3-SAT   3- SUN	15 (+5) MON   2-TUE   2- WED   2-THU   2- FRI   3-SAT   3- SUN	
 SURINAM AIRWAYS	PARAMARIBO (VIA CUR)	2 MON   FRI	2 MON   FRI	2 MON   FRI	2 MON   FRI	2 MON   FRI	2 MON   FRI	
 wingo	BOGOTA	2 THU   SUN	3 TUE   THU   SUN	3 TUE   THU   SUN	3 TUE   THU   SUN	2 THU   SUN	2 THU   SUN	
	MEDELLIN	3 WED   FRI   SUN	4 WED   FRI   SAT   SUN	5 MON   WED   FRI   SAT   SUN	5 MON   WED   FRI   SAT   SUN	3 WED   FRI   SUN	3 WED   FRI   SUN	
	CALI SEASONAL SERVICE		3 (+1) TUE   THU   SUN	3 (+1) TUE   THU   SUN	3 (+1) TUE   THU   SUN	2 THU   SUN	2 THU   SUN	

# Flight Schedule

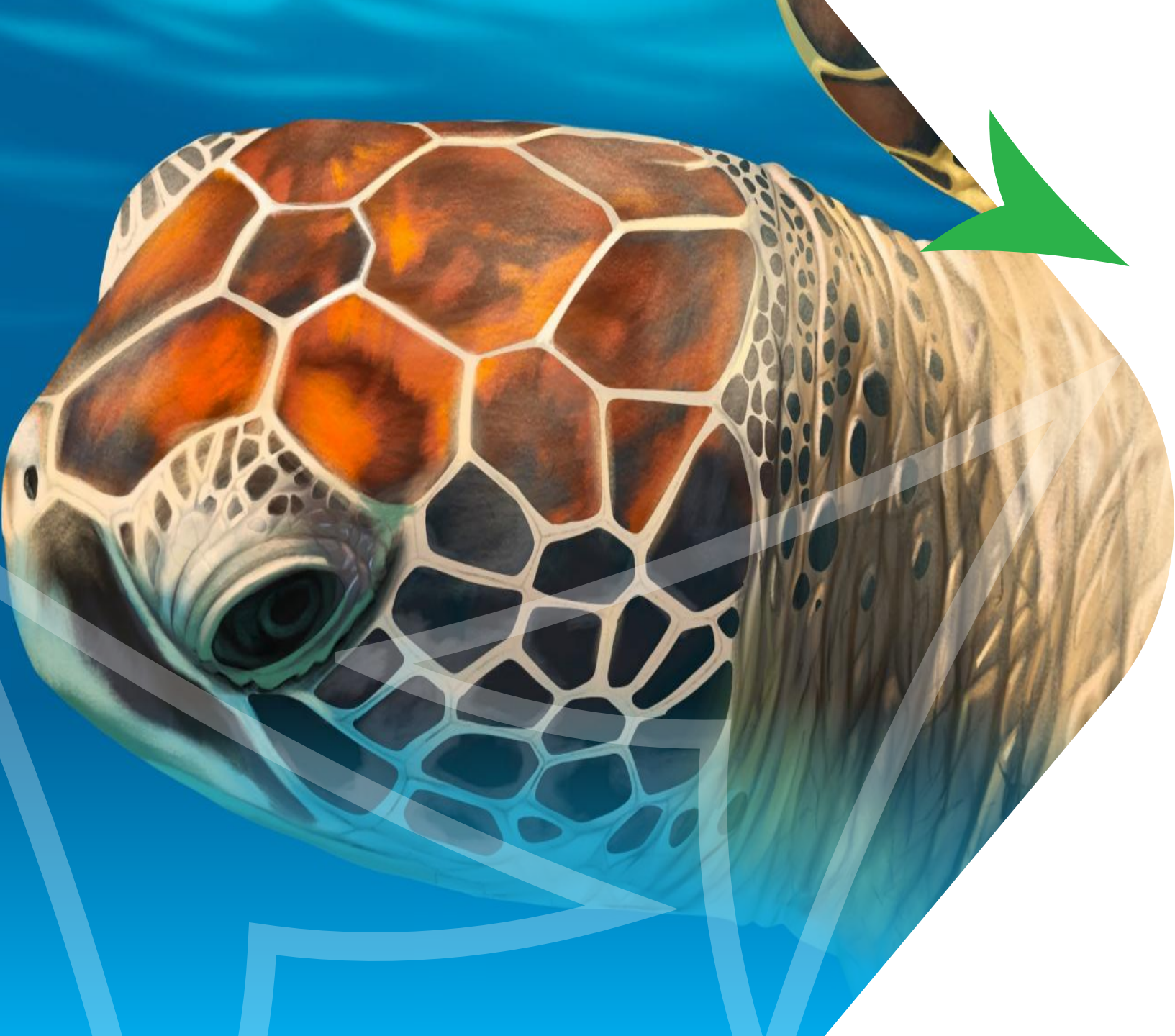
May – October 2026

Note: Flight schedules are subject to change without prior notice and should not be considered final

## LATIN AMERICA

AIRLINE	DESTINATION	SUMMER PERIOD						
		May	June	July	Aug	Sept	Oct	
	<b>BUCARAMANGA</b> NEW ROUTE		2 WED - SAT	2 WED - SAT	2 WED - SAT	2 WED - SAT		
	<b>BARRANQUILLA</b> NEW ROUTE			2 THU - SUN	2 THU - SUN	2 THU - SUN	2 THU - SUN	
	LIMA	7 (+2) Daily, additional TUE and FRI	7 (+2) Daily, additional TUE and FRI	7 (+2) Daily, additional TUE and FRI	7 (+2) Daily, additional TUE and FRI	7 (+2) Daily, additional TUE and FRI	7 (+2) Daily, additional TUE and FRI	
	GUARULHOS, BR	2 (+1) WED   SAT	2 (+1) WED   SAT	2 WED   SAT	2 WED   SAT	2 WED   SAT	2 WED   SAT	
	<b>CORDOBA</b> NEW SEASONAL ROUTE							
	<b>BUENOS AIRES (EZE)</b> NEW ROUTE	4 MON   FRI   SAT   SUN	4 MON   FRI   SAT   SUN	5 MON   TUE   THU   SAT   SUN	4 MON   FRI   SAT   SUN	4 MON   FRI   SAT   SUN	4 MON   FRI   SAT   SUN	





For any questions related  
to the report and/or additional  
information requests  
please contact

**Mary Joan Wardlaw**

Aviation Business

Development Manager

[m.wardlaw@airportaruba.com](mailto:m.wardlaw@airportaruba.com)

*Let's Stay  
Connected*

